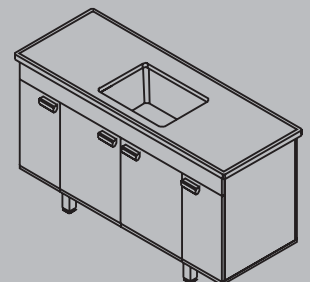
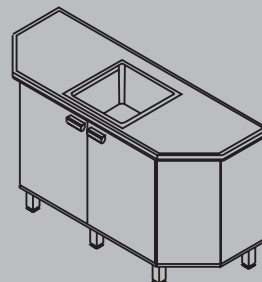
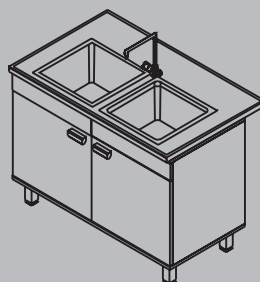
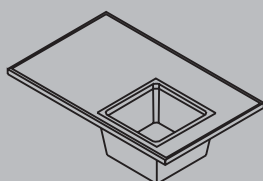
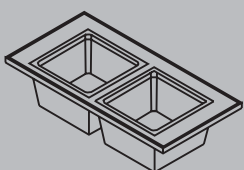


Laboratory sinks



→ GENERAL PROPERTIES

- Moisture-proof melamine coated chipboard cupboard RAL 7047
- All edges protected with ABS tape 0,8mm, rear panel moisture-proof media pan two-sided melamine film coated
- Moisture-proof melamine coated chipboard door
- Metal drawers with bearings
- PP legs RAL 7047 height 150 with leveling breaks
- ABS ergonomic handles with identification slot
- High load capacity and stability
- According to EN 13150
- Worktops made of: technical ceramic material, epoxy, HPL, stainless steel, polypropylene or compact, according to laboratory use



Laboratory sinks

→ DIMENSIONS

	WIDTH	DEPTH	HIGHT	NUMBER	REFERENCE
standard	600	750	900	1	E
measures	1200	750	900	1,2	A,B,C,D,E
	1500	600	900	1	E
	1800	750	900	1,2	A,B,C,D,E
non-standard measures	600	600	900	1	A,B,C,D,E
	900	600	900	1	
	900	750	900	1	
	1200	600	900	1,2	
	1300	600	900	1,2	
	1600	600	900	1,2	
	1800	600	900	1,2	

→ SINK MODULE DIMENSIONS

	WIDTH x DEPTH x HIGHT	REFERENCE
standard	100 x 100 x 100	A
	100 x 250 x 150	B
	300 x 300 x 200	C
	400 x 400 x 300	D
	500 x 400 x 300	E

→ STANDARD WORKTOPS



TECHNICAL CERAMIC MATERIAL

High mechanical and chemical resistance, fireproof.



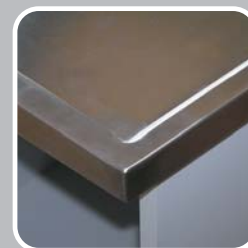
POLYPROPYLENE

High chemical resistance.



EPOXY

High chemical resistance. Possibility of junctions with no transition (for microbiology).



STAINLESS STEEL

Worktops for demanding mechanical and moisture conditions (wash-rooms).

Grga & Melita

Croatia, 10 000 Zagreb, Sveti Duh 62

tel: +385 (1) 3745 510, 3906 616

mob: +385 (98) 355 274, 492 717

fax: +385 (1) 3906 615

e-mail: grga-melita@zg.t-com.hr

web: www.grga-melita.hr